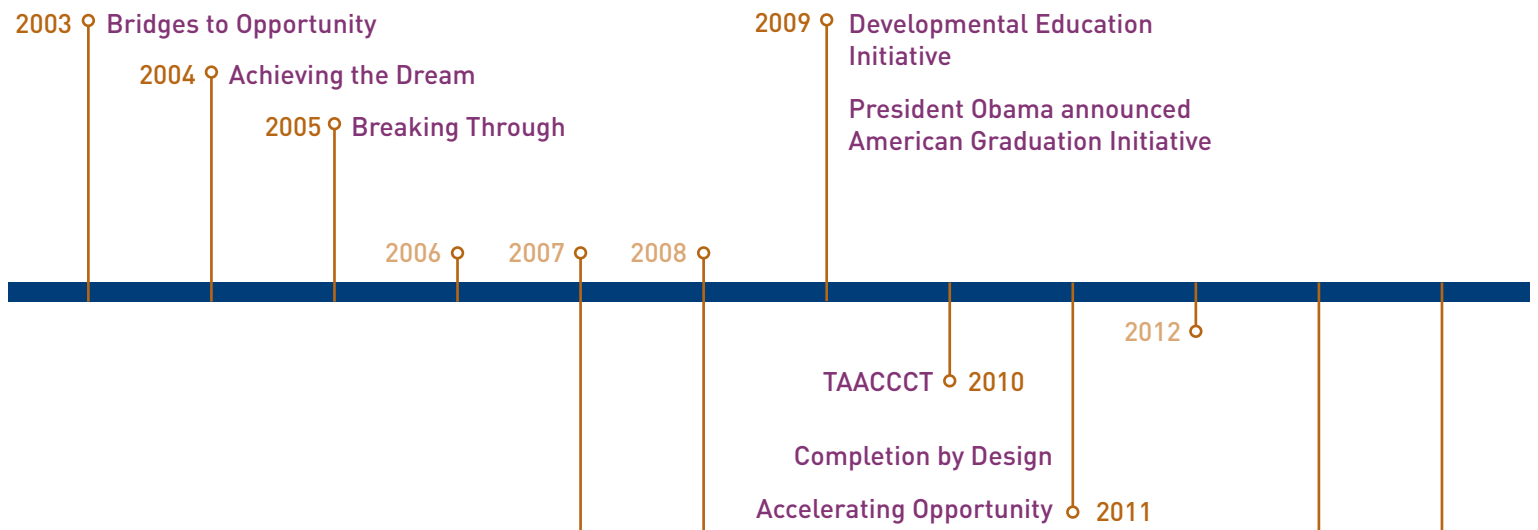


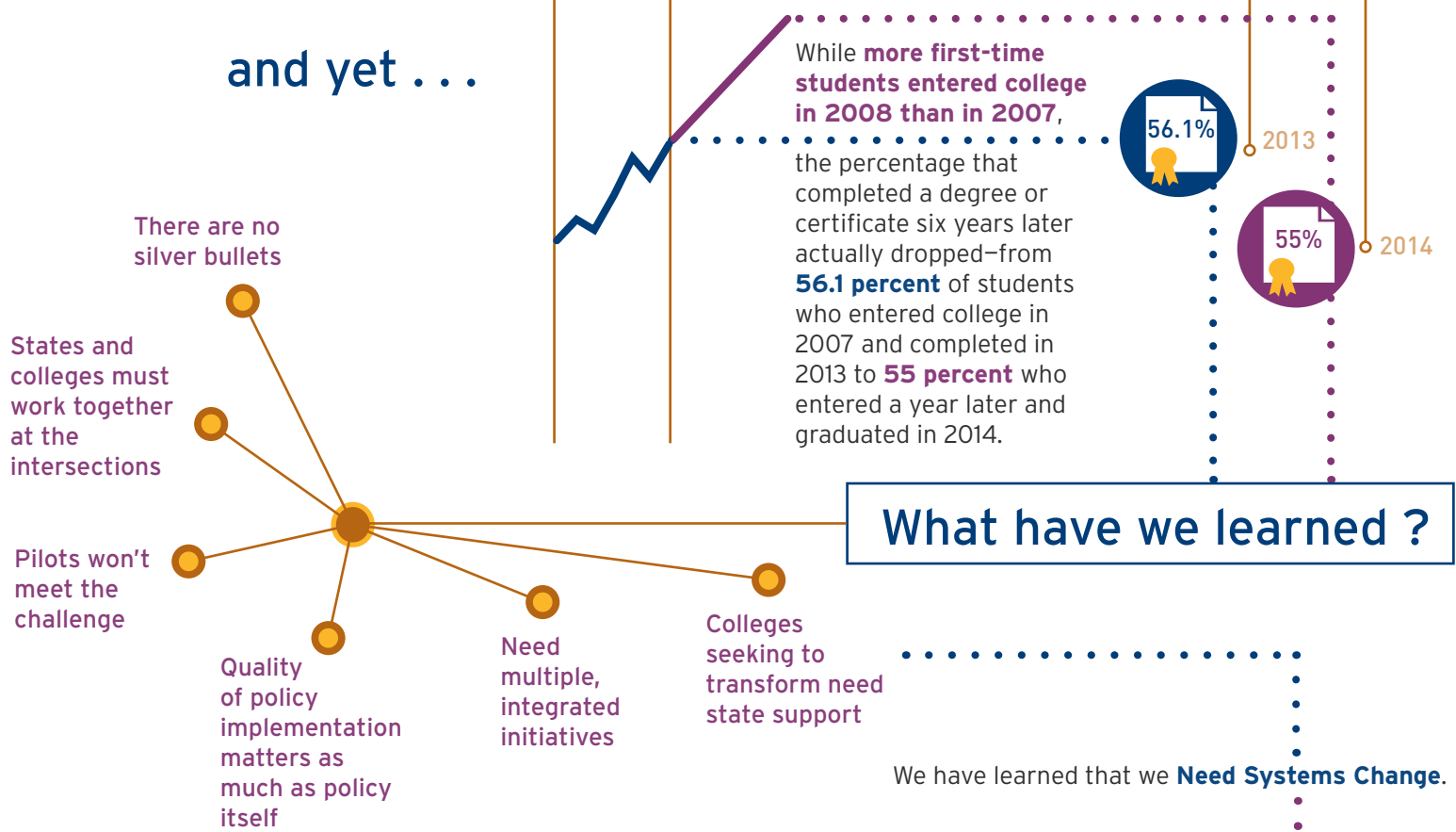
More than a decade of the college completion movement . . .



For more information, please contact:

Michael Lawrence Collins
Associate Vice President,
Postsecondary State Policy
mcollins@jff.org

and yet . . .



How do we get there?

DesignForScale

A New Trajectory for College Completion: Creating a visionary policy environment that encourages and supports colleges to implement integrated, evidence-based student success reforms at scale.

Recommendation 1: Create state policy conditions that support colleges' efforts to undertake comprehensive, integrated redesign

[DesignForScale: State Innovation Series](#)

Step 1: Charge a team with analyzing the existing policy environment

[DesignForScale: State Self-Assessment Tool](#)

Step 2: Prioritize policy changes in support of transformational change

[Policy Meets Pathways: A State Policy Agenda for Transformational Change](#)

State Structures

1. Encourage a systematic self-assessment of institutional policies and practices.

[DesignForScale: College Self-Assessment Tool](#)

2. Create structures for authentic statewide faculty engagement.
3. Engage diverse stakeholders systematically.
4. Create and support a statewide Student Success Center.
5. Join cross-state learning and action networks.

State Policy Framework

1. Streamline program requirements and create clearly structured programs of study.
2. Encourage colleges to redesign developmental education into accelerated on-ramps to programs of study.
3. Support colleges in implementing wrap-around student supports.
4. Ensure pathways lead to valuable credentials and durable competencies.
5. Support colleges' strategic use of data.
6. Create financial incentives for institutions and students.
7. Invest professional development dollars to create authentic faculty engagement.